



**Mestrelab Research**

chemistry software solutions

[www.mestrelab.com](http://www.mestrelab.com)

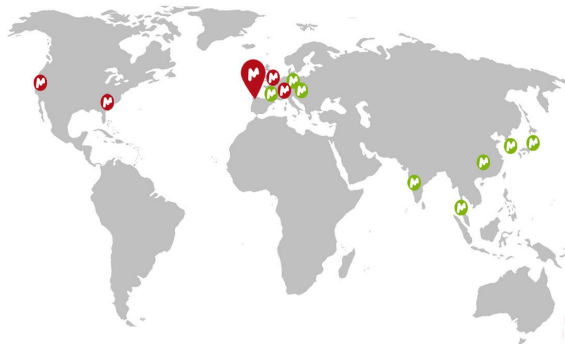


Mestrelab Research

# Mestrelab Research Chemistry Software Solutions

## Development of software for the processing and analysis of Analytical Chemistry data

- **R&D** is the primary focus and heart of our company with in-house developed next generation reprocessing and analysis **algorithmia**.
- Our main product **Mnova** is a multiplatform (**Windows, Mac, Linux**) and multivendor software suite designed for combined analytical data from **NMR, LC/GC/MS, IR, UV, IR and Raman** techniques.
- Mestrelab also develops **Mbook**, an **ELN** designed by chemists for chemists.



- A shared interface for all our plugins and its **automation capabilities** allow our users a minimal learning curve and optimize workflows by combining different technique data on the same application.



Mestrelab Research

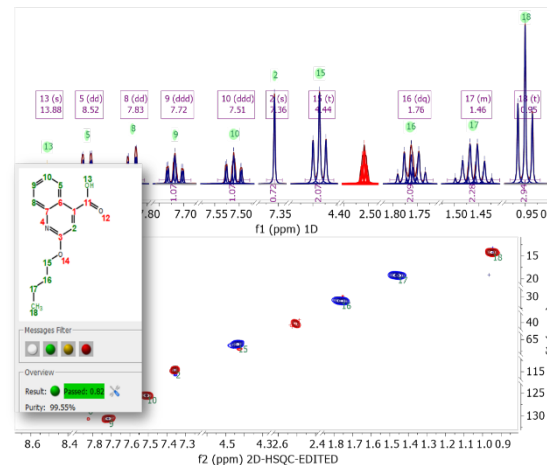
# Mestrelab product range

## Basic

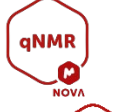
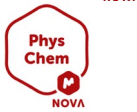


## Processing, analysis and reporting

- NMR
- LC/GC-MS
- IR/UV/Vis/Raman



## Advanced Specialist



## Mnova advanced plugins

- Reaction monitoring (RM)
- NMR Prediction
- DataBase
- Automatic structure verification
- Ligand screening/binding NMR data
- qNMR & mixtures analysis
- PhysChem properties
- Biologics Higher Order Structure
- 2D and 3D structure elucidation

## Other products

- Mbook (ELN) for chemists
- Mnova NMR app for tablet
- Mnova Gears for automation





Mestrelab Research

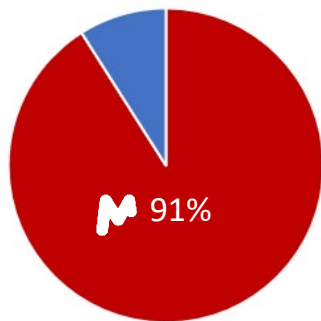
# Mestrelab Research

## OUR CUSTOMERS

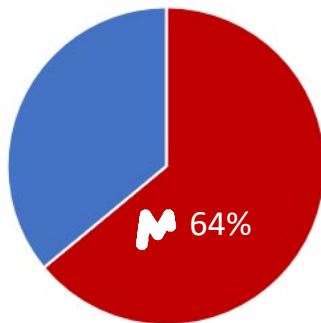
Over **120,000** chemists, **300** companies and **500** Universities use our solutions on a daily basis!



TOP 100 Universities



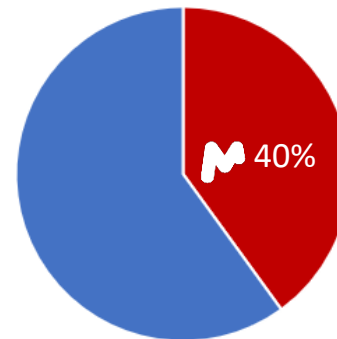
TOP 50 Pharma Companies



TOP 20 Chemical Companies



TOP 20 F&B Companies

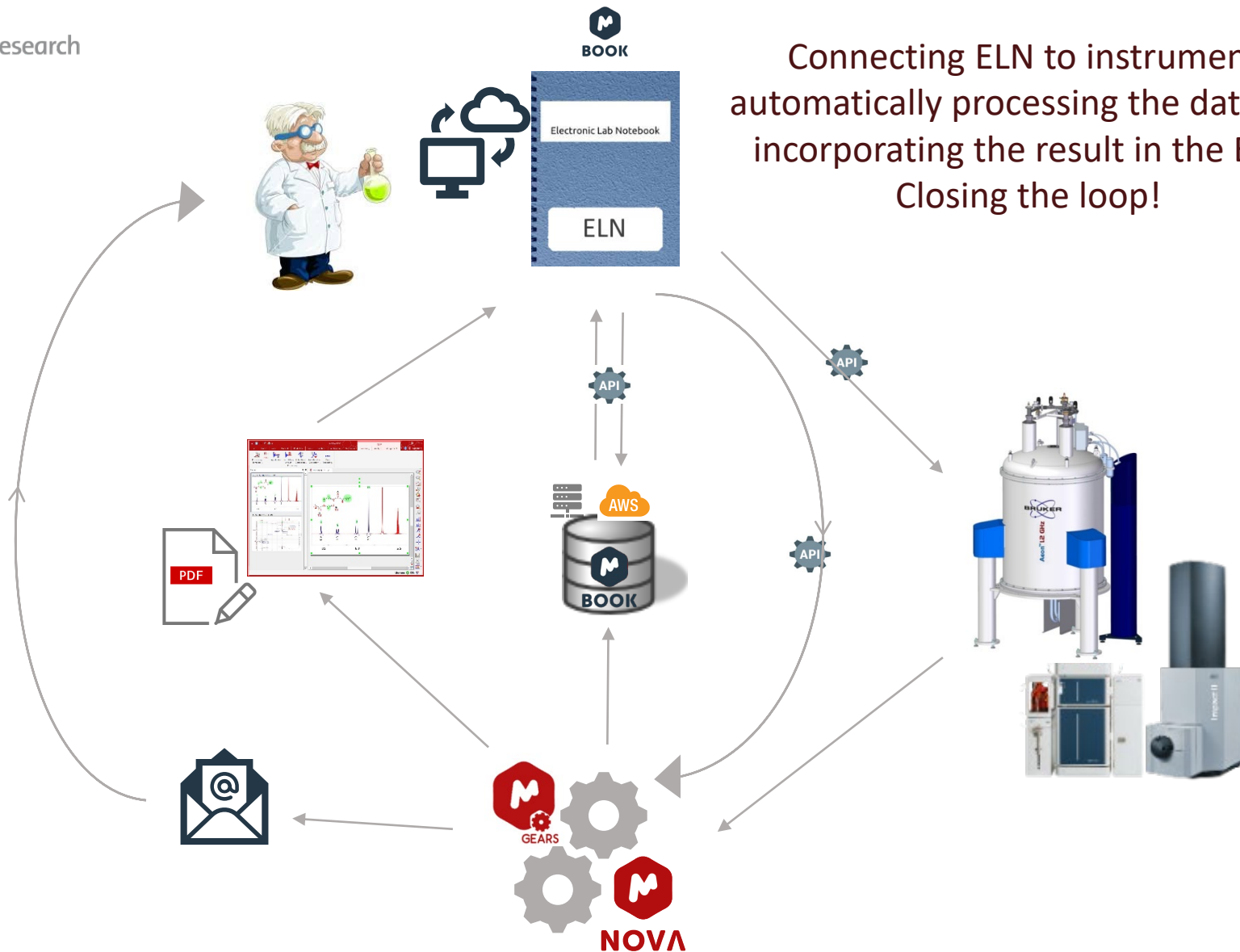




Mestrelab Research

## Ultimate Goal:

Connecting ELN to instrument,  
automatically processing the data and  
incorporating the result in the ELN:  
Closing the loop!



Improving efficiency by working exclusively with customer's ELN